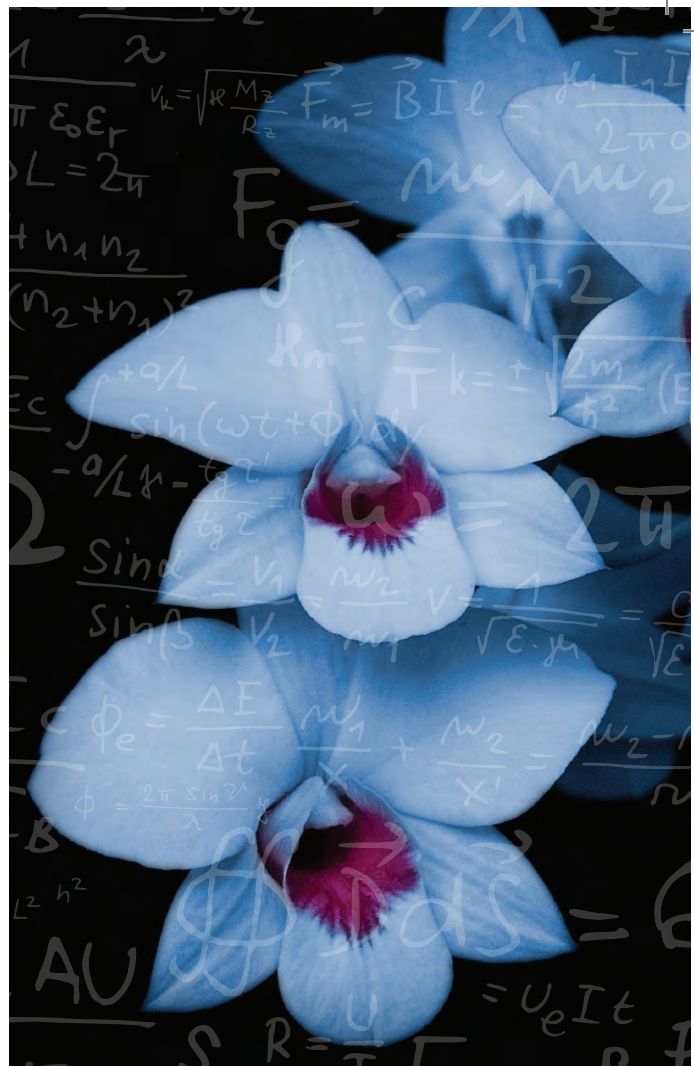
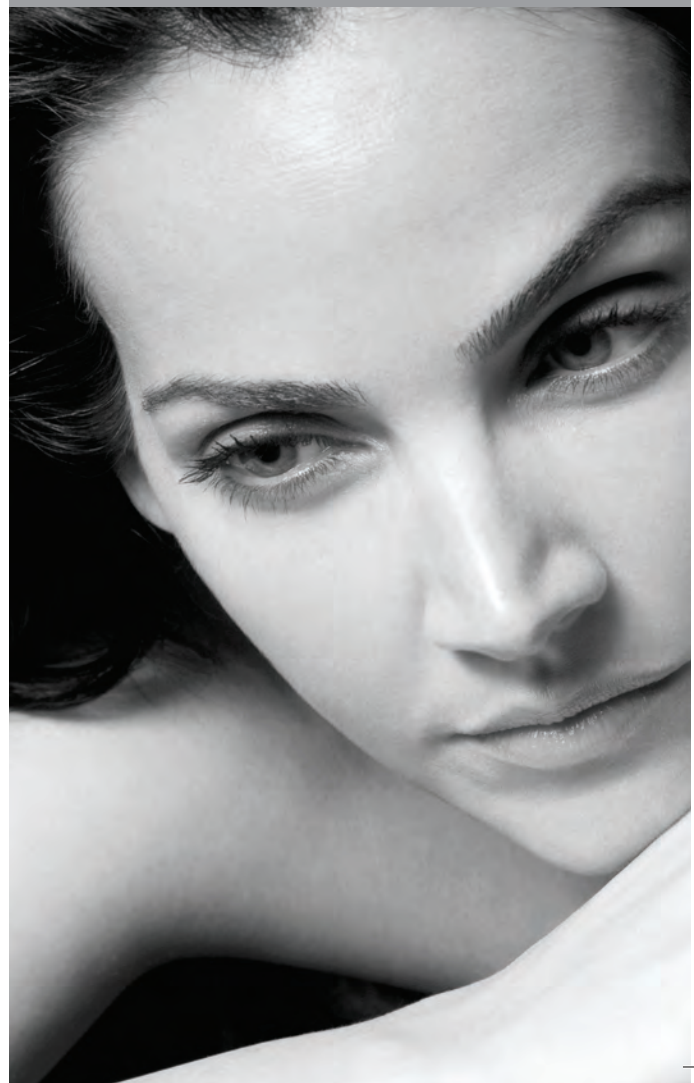


eLight™

Complete
Facial Aesthetic
Solution



Science. Results. Trust.



Syneron®



“I am thrilled to be able to offer my patients a total skin rejuvenation treatment, addressing all aspects of their skin flaws.”

Judith Hellman, M.D., New York, NY

eLight™

Clear, Smooth & Rejuvenated Skin

eLight™ is a complete facial treatment system. Proven safety and efficacy for a wider range of skin textures and tones means eLight can help build your practice.



elight™

The Technology

The elōs[®] Technology Advantage

The eLight features proprietary elōs combined-energy technology of bi-polar radio frequency (RF) with both light and diode laser energies.

- Increased selectivity, deeper dermal penetration
- Less optical energy, when synergistically combined with bi-polar RF, improves the safety factor when treating all skin types

Engineered for Safety. Easy to Use & Maintain

- Proprietary Active Dermal Monitoring™ feature monitors dermal temperature changes during each pulse for added safety
- Contact cooling promotes patient comfort
- Complete your own upgrades – no tools, no technicians
- Portable, lightweight, small footprint

How elōs Works

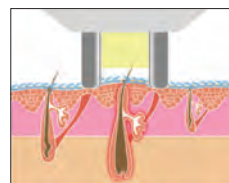


Fig. 1
Contact is made with skin and cooling begins.

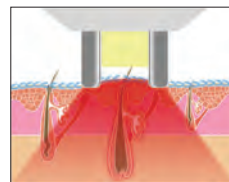


Fig. 2
Laser pre-heats target.

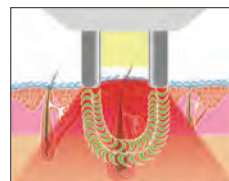


Fig. 3
RF is drawn toward heated target deep inside the dermis, and both energies work to attack both the inside and outside of the target.

Full Facial Applications

Skin Rejuvenation via Vascular and Pigmented Lesion Treatment [SR and SRA Applicators] The SR Applicator rejuvenates the appearance of skin by treating superficial benign vascular and pigmented lesions including telangiectasias, symptoms of rosacea and angioma.

Highly selective broad spectrum light energies are absorbed by the hemoglobin and pigmented lesions, but not significantly absorbed by the normal dermis. Choose the SRA Applicator to aggressively treat stubborn and resistant superficial benign pigmented and vascular lesions on lighter skin colors.

ReFirme® [ST Applicator] The ST Applicator firms and tones skin via wrinkle treatment with the elōs combination of infrared optical energy and bi-polar radio frequency. Achieve exceptional, immediate patient satisfaction with enhanced comfort.

Hair Removal [DS Applicator] The DS Applicator achieves permanent hair reduction of pigmented and minimally pigmented hair on all skin types, including tanned skin. Unlike systems that use only light for efficacy, RF does not rely on a chromophore like melanin to work. This allows elōs to safely target and remove hair with efficacy equal to or better than systems based on light alone.

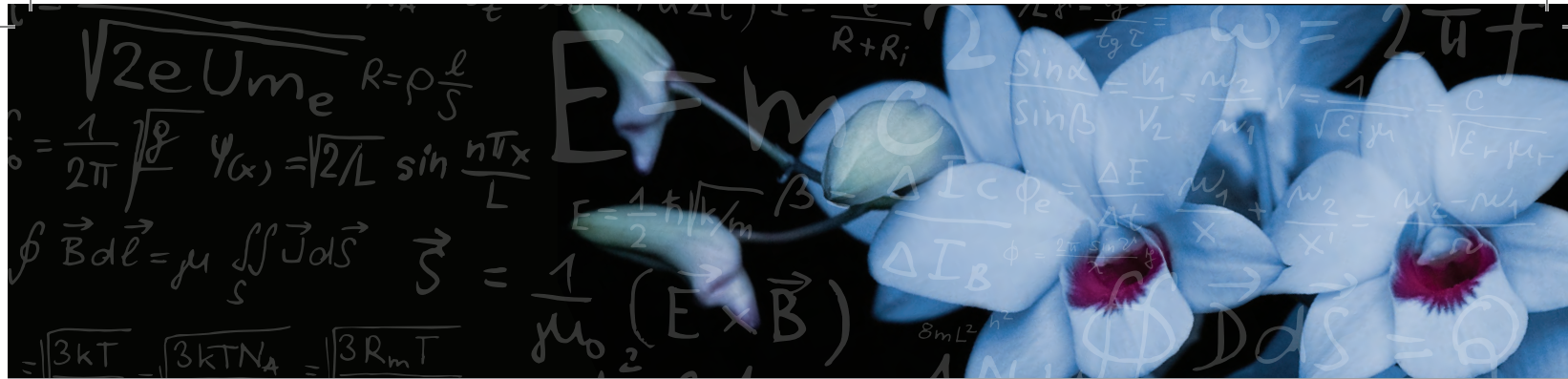
Acne Treatment [AC Applicator] Reduce sebaceous gland activity and destroy active acne. The combined energies of elōs – natural photodynamic therapy (400-980-nm spectrum) simultaneously combined with RF – enables highly selective targeting of the sebaceous glands and acne bacteria.



Clear, Smooth & Rejuvenated Skin

System Specifications

Application Heads	ST Skin Treatment	SR Skin Rejuvenation	SRA Advanced Skin Rejuvenation	AC Acne Treatment	DS Hair Removal
RF Energy	Up to 120 J/cm ³	Up to 25 J/cm ³	Up to 25 J/cm ³	Up to 20 J/cm ³	Up to 25 J/cm ³
Light Fluence	Up to 10 J/cm ²	Up to 45 J/cm ²	Up to 45 J/cm ²	Up to 18 J/cm ²	Up to 45 J/cm ²
Spectrum	700 - 2000 nm	580 - 980 nm	470 - 980 nm	400 - 980 nm	680 - 980 nm
Cooling	5°C on skin surface				
Skin Impedence Control	Online				
Treated Area	12 x 8 mm	12 x 25 mm	12 x 25 mm	12 x 25 mm	12 x 25 mm
Pulse Repetition Rate	1.2 Hz	0.7 Hz	0.7 Hz	0.7 Hz	0.7 Hz
Platform Weight	55 lbs. / 25 Kg.				
Platform Size	35.5 x 15 x 15" / 90 x 38 x 38 cm				
Electrical Requirements	Standard 110 VAC (230 VAC)				



Science. Results. Trust.

Syneron and Candela are the global leaders in the aesthetic medical device marketplace.

We are one company with two distinctive brands. We combine a level of innovation, expertise and customer understanding superior to that of any company in our industry.

Financial stability, through our aligned resources, allows our new company to offer customers the broadest available product portfolio, the best global service organization and an expansive worldwide distribution network.

Together, we are more market responsive than ever before. We know how to quickly innovate the safest and most effective products to meet a variety of needs and price points. We are even stronger at anticipating future market trends to help support our customers and their patients. With new breakthrough technologies currently in the pipeline, we are ideally positioned to maintain our global leadership and continue to help you grow your practice.

Syneron and Candela have offices and distributors around the world.

www.syneron.com | www.candelalaser.com

Syneron Medical Ltd.
Industrial Zone,
Tavor Building
P.O.B. 550 Yokneam Illit
Israel 20692
Tel: +972 73 244 2200
Email: info@syneron.com

Syneron Medical (HK) Ltd.
Room 3103, Hopewell Centre
183 Queen's Road East
Wanchai
Hong Kong
Tel: +852 25434326
Email: infoasia@syneron.com

Candela Corporation
530 Boston Post Road
Wayland, Massachusetts 01778
USA
Tel: 508 358 7400
1 800 733 8550
Email: info@candelalaser.com

Candela Iberica, SA
Av Castilla, 2, Edif. Europa,
bj. PE San Fernando de Henares
28830 Madrid
Spain
Tel: +34 91 656 85 63
Email: candela-iberica@candela-iberica.com

Syneron[®]

 **CANDELA**[®]